



Theta Enterprises, Inc. NEWSLETTER

©2004 - Theta Enterprises, Inc.

November 2004

Published by:

John G. Svinos, President

**Theta Enterprises, Inc.
1211 W. Imperial Hwy.
Suite 105
Brea, CA 92821-3724 USA**

**Phone #: (714) 526-8878
Fax #: (714) 526-8875**

Electronic Mail:

jsvinos@gotheta.com

Internet Home Page:

http://www.gotheta.com

Or http://www.xspoc.com

New XDIAG 3.0 Now Available:

A new version of XDIAG has been released (see Figure 1). This new version has many improvements to the user interface and is a full 32 bit version that supports long file names, running multiple copies of the program, and a lot more. Some of the most important new features for the new XDIAG are listed below:

- 1) Improved and expanded pattern recognition database for more accurate problem diagnosis.
- 2) Improved user interface including next and previous input window buttons.
- 3) Improved report that appears the same on the screen as on the printer.
- 4) Resizable windows.
- 5) Improved Setup window.

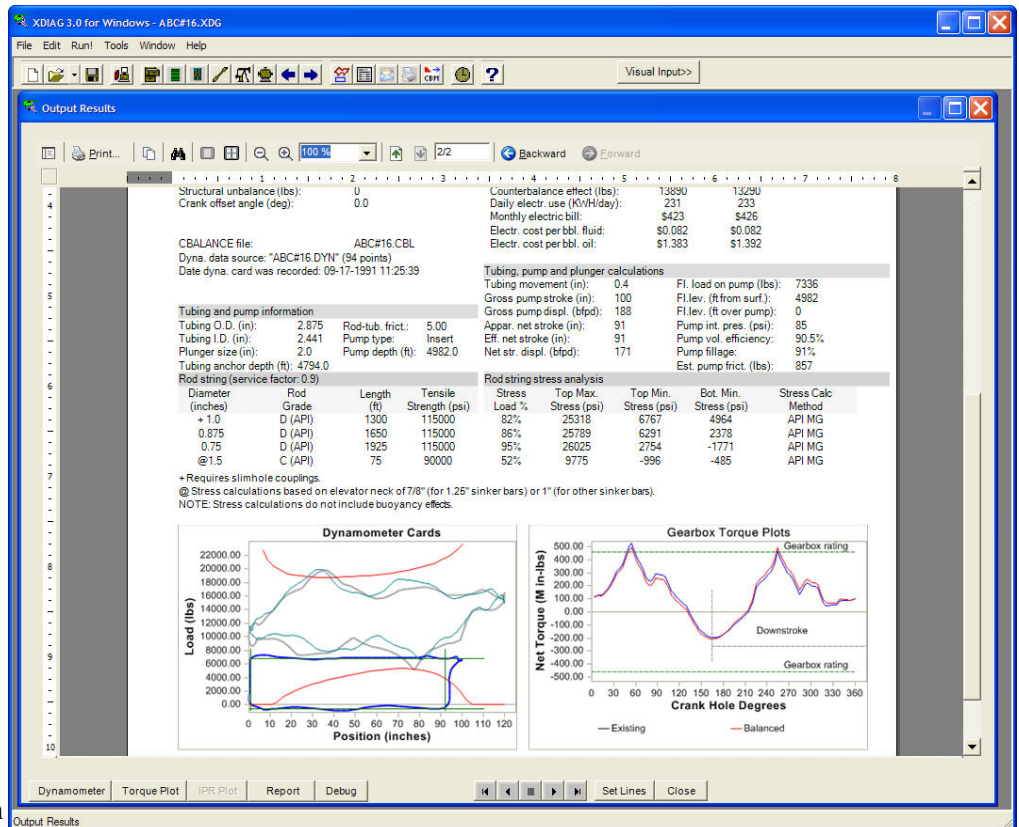


Figure 1. The new XDIAG 3.0 Output Report Window

- 6) The ability to email cases directly from XDIAG.
- 7) Improved batch run capability that creates MS Excel spreadsheet files.
- 8) Faster execution.
- 9) Backwards compatible with previous versions of XDIAG and RODDIAG files.
- 10) Compatible with the new version of CBALANCE.

This new version of XDIAG is now available for download from our web site. If you are an XDIAG user and you would like to download the new version of

CBALANCE, please contact Rudy Nesmith at rudy@gotheta.com to be setup with a user name and password. If you are already setup for downloads, you can simply download this new version from our web site at any time.

If your technical support for XDIAG has expired, back technical support has to be paid plus there is a US\$850.00 upgrade charge for the new version.

Customers who have maintained their technical support can download this new version for free.

X-Tools under Development

Since a few months ago Theta Enterprises, has been developing a new computer program called "X-Tools." This is a utility program that assists you in the optimization of rod pumping systems. As of now, this new program has three modules:

- Strokes Per Minute (SPM) and motor sheave sizing.
- Poorboy gas anchor design.
- Tubing Anchor Design.

Figure 2 shows the SPM/Motor sheave sizing window. You have the option of either entering a pumping speed and having the program calculate the sheave size you need, or you can enter the sheave size and

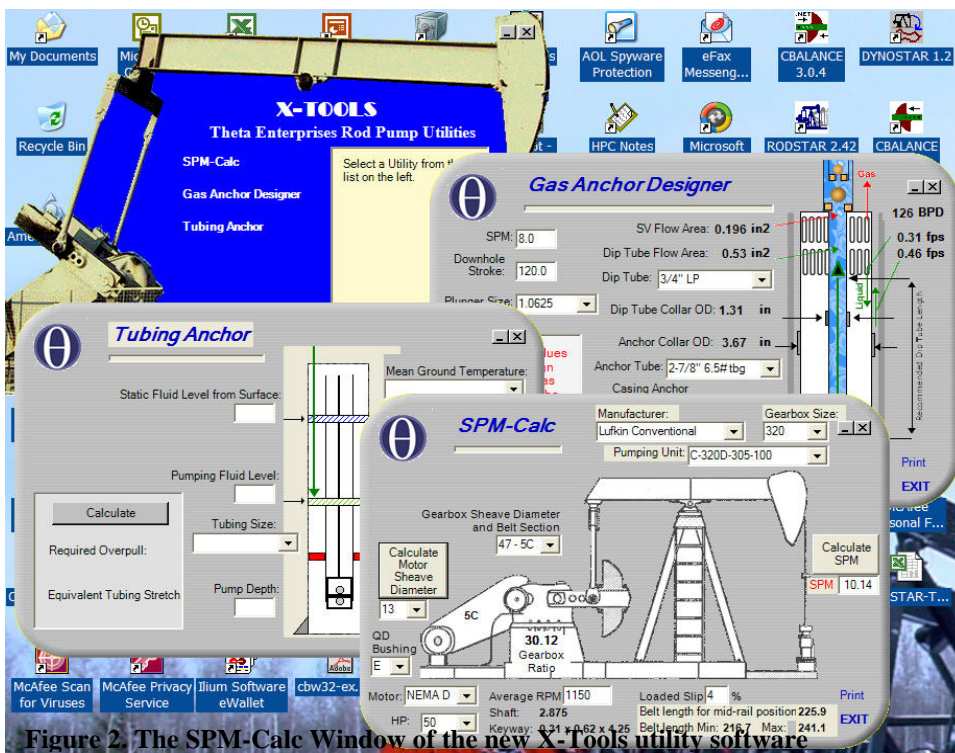


Figure 2. The SPM-Calc Window of the new X-Tools utility software

have the program calculate the SPM that this sheave will give you.

The gas anchor design calculates the dip tube length and diameter, the number of slots or holes you need for the dip tube and mud anchor the size of the mud anchor, etc.

The Tubing Anchor utility calculates the required overpull force and equivalent tubing stretch for

setting a tension tubing anchor correctly.

We estimate that X-Tools will be released the first quarter of 2005. Please let us know if there are any other utilities you would like to see included in X-Tools.

Deviated version of RODSTAR Closer to Beta Release.

A lot of progress has been made on the new deviated version of RODSTAR since the last newsletter. We hope to have a beta test version of the program

From this information and from the calculations of side load, the program will recommend the number of rod guides you will need.

We would like to compare predicted versus actual results from as many cases as possible. Please let us know if you have measured dynamometer data from deviated wells that you can provide us. Your help will be really appreciated and will help us complete the deviated version of RODSTAR sooner.

New Pumping Unit Manufacturers to be Added to CBALANCE.

By the time you read this, a new version of CBALANCE should be available with data for the following pumping unit manufacturers:

- 1) National
- 2) Torqmaster
- 3) Oilwell

The new version number for CBALANCE that includes the above unit data is 3.0.4 and should be available for download from our web site shortly.

Upcoming Rod Pumping Optimization Schools for 2004:

Midland, TX: November 17-19

Houston, TX: December 6-10

For more information, or for the complete 2005 schedule of courses, or to enroll please visit our web site at <http://www.gotheta.com>

by the end of this year if no unexpected problems arise.

Many new capabilities are being developed including a 3-D viewing window that allows you view and spin the 3-D plot deviation plot, zoom in, etc.

Also, the program will allow you to select a rod guide type and enter the manufacturer recommended side load per guide.